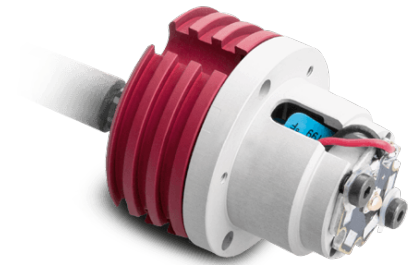




OPTO ENGINEERING

LTSCHP3W-W | DATASHEET

Replacement LED module 3W, white



LTSCHP modules power several Opto Engineering® LED illuminators and feature excellent current stability. They are available in various colors and can be ordered as spare parts.



SPECIFICATIONS

Lighting specifications

| | | |
|------------------------------|------|---------------|
| Light color, Peak wavelength | | white, 6000 K |
| Spectral FWHM | (nm) | - |
| Diffusive diameter | (mm) | - |

Electrical specifications

| | | |
|--|------|------------|
| Supply voltage ¹ | (V) | 12-24 |
| Power consumption | (W) | 4.5 |
| Led forward voltage typical (max) ² | (V) | 2.8 (-) |
| Max led forward current ³ | (mA) | 720 |
| Max pulse current ⁴ | (mA) | 2000 |
| Connector | | M8 |
| Included cable | | CB244P1500 |

Mechanical specifications

| | | |
|----------|------|------|
| Diameter | (mm) | 38.5 |
| Length | (mm) | 46.1 |

¹ Tolerance $\pm 10\%$

² At max forward current. Tolerance is $\pm 0.06V$ on forward voltage measurements

³ In continuous mode (not pulsed)

⁴ At pulse width ≤ 10 ms and duty cycle $\leq 10\%$. Built-in electronics board must be bypassed (see tech info)

Environment

| | | |
|-----------------------------|------|-----------------------|
| Operating temperature | (°C) | 0-40 |
| Storage temperature | (°C) | 0-50 |
| Operating relative humidity | (%) | 20-85, non condensing |
| Installation | | Indoor use only |

Eye safety

| | |
|--------------------------------|--------------|
| Risk group (CEI EN 62471:2010) | Risk group 2 |
|--------------------------------|--------------|

NOTE

The compliancy with regulations is guaranteed only if the device is used as replacement part for Opto Engineering's products.

COMPATIBLE PRODUCTS

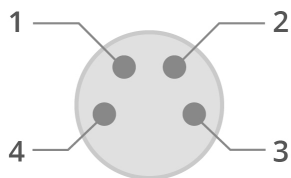
Full list of compatible products available [here](#).



A wide selection of innovative machine vision components.

All product specifications and data are subject to change without notice to improve reliability, functionality, design or other. Photos and pictures are for illustration purposes only. Data are reported by design, actual lens performance may vary due to manufacturing tolerances.

CONNECTOR PINOUT



Device side

| Pin | Function | Cable color |
|-----|-------------------------|--------------|
| 1 | Earth | Yellow/Green |
| 2 | Ground | Black |
| 3 | Anode | Blue |
| 4 | Power supply (+12/24 V) | Brown |

